

**NEW ZEALAND  
OWNED AND  
OPERATED**



# survey and construction consumables

Spring 2024 Brochure



# We are ProSolve®

We have been a go-to supplier for survey, industrial and construction consumables since 1982. From set out stakes, marker paints and tapes through to civil engineering essentials. Choose ProSolve® and discover why we're industry's trusted partner.

**Contact our team today who will be happy to help!**  
**Branches in AUCKLAND & CHRISTCHURCH**



**CALL 09 218 5566 (Auckland)**  
**/ 03 925 8217 (Christchurch)**

**EMAIL [sales.nz@prosolveproducts.com](mailto:sales.nz@prosolveproducts.com)**

**WEB [www.prosolveproducts.co.nz](http://www.prosolveproducts.co.nz)**



## Our Promise To You...



**GOODS DESPACHED ON  
SAME DAY / NEXT DAY  
DELIVERY SERVICE**



**FREE TECHNICAL  
SUPPORT HELPLINE**



**NO-QUIBBLE  
GUARANTEE**



**BRANCHES ON  
NORTH &  
SOUTH ISLAND**



**NO MINIMUM  
ORDER QUANTITY**



**SIMPLE  
HASSLE FREE  
ORDERING**

\* All courier delivery services are subject to stock, courier area, availability and demand. All transactions are carried out in accordance with the ProSolve standard terms and conditions (copy available on request).

## Contents

|                         |    |
|-------------------------|----|
| Survey Consumables      | 04 |
| Aerosols                | 10 |
| Site Set Up             | 15 |
| Erosion Control         | 26 |
| Pens, Pads, Crayons     | 30 |
| Construction Essentials | 32 |
| Concrete / Asphalt      | 35 |
| Tapes                   | 38 |
| ProTect+ Range          | 39 |
| Traffic Management      | 41 |
| Tools                   | 42 |
| Merchandisers           | 45 |



## MERCHANDISERS

FREE  
MERCHANDISING  
SOLUTIONS

**Want to enhance the brand and maximise selling opportunities in your branch?** Our FREE merchandising solutions are available to all merchants and are delivered, set-up and stock managed by our field support team. See page 45 for more information.



## What Others Are Saying...

*Thank you very much ... it's been great to work with you.*

**Lee / Surveyor - Auckland**

*Perfect - great service.*

**Sharon / Admin - Red Beach**

*Thank you for the prompt service.*

**Melissa / Surveyor - Christchurch**

*We just want to thank you and your team for the service you guys have provided us this year, especially those times you went out of your way to stay open later so we could pick up gear for an early start the next day and even when you didn't stock a particular product we were after, you simply sourced it and added it to your extensive product range.*

**Peter / Project Manager - Auckland**

## SET-OUT STAKES



### SET-OUT STAKES

A range of wooden set-out stakes which are made from top quality softwood, kiln dried and dressed with no structural knots. They are ideal for general survey projects and setting out clear parameters on construction sites.

| Code    | Size W x D x L   | Bundles |
|---------|------------------|---------|
| SOS300  | 45 x 25 x 300mm  | 100     |
| SOS450  | 45 x 25 x 450mm  | 25      |
| SOS600  | 45 x 25 x 600mm  | 25      |
| SOS800  | 45 x 25 x 800mm  | 25      |
| SOS900  | 45 x 25 x 900mm  | 25      |
| SOSI000 | 45 x 25 x 1000mm | 25      |
| SOSI200 | 45 x 25 x 1200mm | 25      |
| SOSI500 | 45 x 25 x 1500mm | 25      |

Also available treated

Also available in white painted.

| Code      | Size W x D x L   | Bundles |
|-----------|------------------|---------|
| SOS600WP  | 45 x 25 x 600mm  | 25      |
| SOS800WP  | 45 x 25 x 800mm  | 25      |
| SOS900WP  | 45 x 25 x 900mm  | 25      |
| SOSI000WP | 45 x 25 x 1000mm | 25      |
| SOSI200WP | 45 x 25 x 1200mm | 25      |
| SOSI500WP | 45 x 25 x 1500mm | 25      |



NEW IMPROVED STRENGTH

### PEG BAG

Strong and sturdy peg bag with shoulder strap for carrying pegs and other field equipment with ease. Size: 300mm diameter x 800mm tall.

| Code     | Qty |
|----------|-----|
| PVPEGBAG | 1   |

### PEG BAR

Unlike other products on the market, this peg bar has a greater emphasis on strength. This can be demonstrated in the manufacturing of our product; the shaft base has extra welding around it for added durability.

| Code     | Length | Qty |
|----------|--------|-----|
| PBAR650  | 650mm  | 1   |
| PBAR1200 | 1200mm | 1   |



## ENGINEERING / BOXING PEGS / TREE STAKES



### TREE / END OF SERVICE LINE STAKES

Premium quality kiln dried tree / garden stakes - available treated and untreated - sharp points for easy driving.

#### Treated Tree Stakes

| Code    | Length | Bundles |
|---------|--------|---------|
| TS1800H | 1800mm | 200/400 |

#### Untreated Tree Stakes

| Code   | Length | Bundles |
|--------|--------|---------|
| TS1500 | 1500mm | 200/400 |
| TS1800 | 1800mm | 200/400 |

## ENGINEERING / BOXING PEGS

These sturdy and durable engineering pegs are perfect for marking out the parameters of your site clearly. The pointed ends ensure an easy insertion into a range of surfaces, while the different lengths can mark out any size or scale of project with ease.

| Code   | Length | Bundles |
|--------|--------|---------|
| EP300  | 300mm  | 56      |
| EP450  | 450mm  | 25      |
| EP600  | 600mm  | 25      |
| EP900  | 900mm  | 25      |
| EPI500 | 1500mm | 25      |

450mm, 600mm & 900mm lengths available treated.

| Code   | Length | Bundles |
|--------|--------|---------|
| EP450H | 450mm  | 25      |
| EP600H | 600mm  | 25      |
| EP900H | 900mm  | 25      |

300mm & 450mm lengths also available in white painted.

| Code    | Length | Bundles |
|---------|--------|---------|
| EP300WP | 300mm  | 56      |
| EP450WP | 450mm  | 25      |



**NON-CONDUCTIVE FENCE PINS**  
SEE PAGE 9

## BOUNDARY PEGS



### PLASTIC BOUNDARY PEGS

High strength, high impact 500mm peg with a good sized head and chamfered shaft for easy driving into the ground.

- With metal detector located in peg
- Lightweight
- Custom colours available

| Code    | Size  | Carton Qty |
|---------|-------|------------|
| PLT500W | 500mm | 30         |



### WOODEN BOUNDARY PEGS

Wooden boundary pegs, ground treated with long pencil points for a better performance in hard ground with less twist. Both variations of peg are white painted.

| Code        | Size W x D x L  | Carton Qty |
|-------------|-----------------|------------|
| WLT500WP    | 75 x 50 x 500mm | 28         |
| WLT70/500WP | 60 x 70 x 500mm | 25         |



### HEAVY DUTY PLASTIC BOUNDARY PEG



**MAGNETIC DISC FOR EASE OF LOCATING**

Manufactured from durable plastic, heavy duty plastic boundary pegs are a popular choice for surveyors as the product is tough, light and easy-to-use. The Y-shaped flute allows for easier driving into tough ground and less resistance to sideways movement when positioning. Comes with magnetic disc in the cap for ease of locating. Also available with RFID chip in the plastic peg, providing passive RFID for easy location identification and data storage – please enquire.

| Code   | Size  | Carton Qty |
|--------|-------|------------|
| PLT500 | 500mm | 60         |



### PLASTIC CAP BOUNDARY PEG

These sturdy and durable boundary pegs are perfect for marking out the parameters of your site clearly. The wooden pointed ends ensure easy insertion into a range of surfaces making marking out and surveying as simple as possible. Comes complete with a white plastic cap for marking and visibility. Ideal when our ProSolve® PLT500W and PLT500 plastic pegs aren't suitable for the job.

| Code    | Size         | Bundle Qty |
|---------|--------------|------------|
| EP500PC | 500mm length | 10         |



### ALUMINIUM BOUNDARY PEG

These ProSolve® aluminium boundary pegs are proven to drive through the most difficult and the toughest of surfaces. Ideal when the traditional timber and plastic boundary pegs just can't do the job. Made of hardened aluminium you can be sure this peg will last the distance.

- Stronger than traditional boundary pegs
  - Drive through harder ground than plastic and wood pegs
  - Will not rot like timber or bend or snap
- Manufactured in New Zealand to our unique specification, these are incredibly tough and hardwearing pegs. Marked with the words "BOUNDARY MARK" on the head.

| Code   | Size         | Bundle Qty |
|--------|--------------|------------|
| ALT500 | 500mm length | 5          |



**TO ORDER**

**CALL 09 218 5566 (Auckland) / 03 925 8217 (Christchurch)**

**E sales.nz@prosolveproducts.com**



**NO MINIMUM ORDER QUANTITY**



**NO-QUIBBLE GUARANTEE**

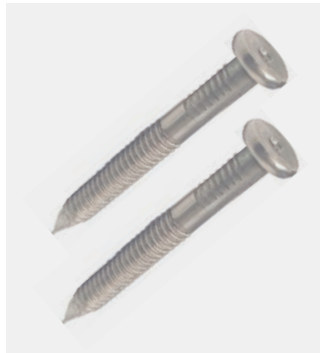
## SURVEY HARDWARE



### HARDENED ROAD NAIL

Manufactured from hardened metal for greater strength and for driving through hard materials. The red cross on the head makes it easy to locate and is typically used as survey marks for curb work. Also works with boundary discs.

| Code      | Size  | Carton Qty |
|-----------|-------|------------|
| HRNAIL40  | 43mm  | 100        |
| HRNAIL55  | 55mm  | 100        |
| HRNAIL80  | 80mm  | 100        |
| HRNAIL120 | 130mm | 100        |



### STAINLESS STEEL NAIL

A 50mm nail typically used for fastening boundary discs to wooden posts. Its annular ring shank increases hold in all types of wood and the diamond point provides easy driving.

| Code   | Size | Carton Qty |
|--------|------|------------|
| SSNAIL | 50mm | 100        |



### CONCRETE FASTENER

This ProSolve® concrete fastener is made from cold rolled steel and provides a secure hold into concrete, block, brick and stone. The mushroom head of the anchor lies above the surface when installed to create a tamper proof seal.

| Code    | Size       | Carton Qty |
|---------|------------|------------|
| CONCFAS | 6mm x 30mm | 100        |



### CONCRETE NAILS WITH WASHER

A small concrete nail with washer specifically designed for easy driving into concrete for set out work.

| Code    | Size | Carton Qty |
|---------|------|------------|
| CNAIL15 | 15mm | 100        |
| CNAIL25 | 25mm | 100        |
| CNAIL40 | 40mm | 100        |



### GALVANISED BOUNDARY SPIKE

Marked with "Boundary Mark", these 200mm long spikes are tapered at the tip for improved driving. Slightly domed head with dimple for a reference point, 10mm diameter shaft and 28mm diameter head.

| Code   | Size  | Carton Qty |
|--------|-------|------------|
| GALVBS | 200mm | 25         |



### GALVANISED SURVEY SPIKE

A 150mm spike with the word "Survey" on the domed head, a smooth 10mm diameter shaft gives good strength for driving.

| Code   | Size  | Carton Qty |
|--------|-------|------------|
| GALVSS | 150mm | 30         |



### BENCHMARK PINS

Stainless pin which is set in concrete as part of NZ geodetic system. Has dimple in the top of the domed head.

| Code         | Size         | Carton Qty |
|--------------|--------------|------------|
| PVBENCHPIN12 | 12mm x 100mm | 1          |
| PVBENCHPIN22 | 22mm x 100mm | 1          |



### SURVEY POINT NAILS

Large 20mm head with central recessed point, allows for precise alignment of survey equipment. The words 'SURVEY POINT' are also shown on the head allowing for easy identification.

| Code       | Size  | Carton Qty |
|------------|-------|------------|
| PVSPN50MM  | 50mm  | 100        |
| PVSPN100MM | 100mm | 100        |

**FLAGGING TAPES**  
SEE PAGE 38  
EXTRA LONG 100M ROLLS



## SURVEY HARDWARE



### DOUBLE SIDED STAINLESS STEEL SURVEY DISC

This double sided disc (stamped Boundary Mark on one side and Survey Mark on the opposite) is manufactured from a premium quality stainless steel with a centrally located hole to fit most fastening options.

| Code   | Size | Carton Qty |
|--------|------|------------|
| DSDISC | 40mm | 100        |



### ROUND BRONZE LINZ PLAQUES

Large headed, round, bronze marker with bevelled edges and central levelling dome. These plaques are ideal as boundary or general survey reference markers.

| Code  | Carton Qty |
|-------|------------|
| LINZP | 1          |



### CAST IRON SURVEY BOX / FRAME

Strong Cast Iron Survey Box / Frame for use on highways and local roads. Original LINZ and NZTA design and weight. Product comes with box / frame only.

| Code / Description                       | Carton Qty |
|------------------------------------------|------------|
| SURLID<br>Cast Iron Survey Lid Only      | 1          |
| SURFR<br>Cast Iron Survey Box/Frame Only | 1          |



### BOUNDARY DISC - 33mm

To meet the latest survey regulations, these top quality aluminium discs feature the words "BOUNDARY MARK" and are built to last. They have a tapered diameter inner hole to assist in accurate nail positioning.

| Code | Size | Carton Qty |
|------|------|------------|
| ABD  | 33mm | 100        |

## GALVANISED TUBE

Top quality galvanised tube which is widely used in the surveying industry. It has been specially treated to resist oxidation and is an excellent choice of steel tube for outdoor use. The tube is medium thickness and has a plain end and can be used in a huge number of demanding structural applications.



| Code        | Diameter | Length | Carton Qty |
|-------------|----------|--------|------------|
| GTUBE15/500 | 15mm     | 500mm  | 16         |
| GTUBE20/500 | 20mm     | 500mm  | 10         |

## STEEL ROD

Steel rods offer an essential, multipurpose solution to your building projects. Also used for survey marks and boxing pins. Available in diameters of 12mm and 16mm.



| Code       | Diameter | Length | Carton Qty |
|------------|----------|--------|------------|
| SROD12/250 | 12mm     | 250mm  | 100        |
| SROD12/500 | 12mm     | 500mm  | 50         |
| SROD16/350 | 16mm     | 350mm  | 28         |
| SROD16/500 | 16mm     | 500mm  | 28         |

## SURVEY ACCESSORIES

### REFLECTIVE TARGETS

These ProSolve® silver reflective targets are compatible with most total stations and come with a heavy-duty adhesive backing which can be applied to most surfaces.

| Code       | Size      |
|------------|-----------|
| PVREFTAR30 | 30 x 30mm |
| PVREFTAR50 | 50 x 50mm |



### SEISMIC MARKERS

Manufactured from strong, impact resistant material for seismic surveys.

- Lightweight.
- Flexible – ideal for areas where animals may be present

| Code      | Carton Qty |
|-----------|------------|
| PVSEISMIC | 50         |





## NON-CONDUCTIVE PIN RANGE



## NON-CONDUCTIVE PINS

Our ProSolve® range of non-conductive / insulated fencing and road pins are 100% insulated between the point and striking surface to help protect against electrocution. They are made from extremely tough fibreglass, ideal for construction sites, holding concrete forms and profile boards, creating simple temporary fencing. Conform to BS8020:2011.

| Code     | Item                              | Carton Qty |
|----------|-----------------------------------|------------|
| PVIFPMS  | Insulated Fence Pin Metal Spike   | 10         |
| PVIFPPS  | Insulated Fence Pin Plastic Spike | 10         |
| PVILP600 | Insulated Line Pin 12mm x 600mm   | 10         |
| PVILP900 | Insulated Line Pin 12mm x 900mm   | 10         |
| PVIRP600 | Insulated Road Pin 600mm          | 10         |
| PVIRP900 | Insulated Road Pin 900mm          | 10         |



## MARKING PAINTS

# HI-VIS FLUORESCENT (WITH SWIVEL SAFETY CAP) PAINT AEROSOL

This quick drying acrylic ‘all angle’ marker paint is a lead and xylene-free formulation, designed to produce fluorescent marks and lines on a range of indoor and outdoor surfaces including concrete, tarmac, wood and composites.

Widely used throughout a vast array of applications including surveying, construction, warehousing, logistics, forestry etc. and is especially useful where brighter, fluorescent marks and lines are required. Comes with a unique safety cap for that added protection when not in use.

| Code      | Colour        | Size  | Carton Qty |
|-----------|---------------|-------|------------|
| PVHVISFBA | Fluor. Blue   | 500ml | 12         |
| PVHVISFGA | Fluor. Green  | 500ml | 12         |
| PVHVISFOA | Fluor. Orange | 500ml | 12         |
| PVHVISFPA | Fluor. Pink   | 500ml | 12         |
| PVHVISFRA | Fluor. Red    | 500ml | 12         |
| PVHVISFWA | Fluor. White  | 500ml | 12         |
| PVHVISFYA | Fluor. Yellow | 500ml | 12         |



BEST SELLER

# SPOT MARKER PAINT AEROSOL

ProSolve® spot marking paint is a high quality, fast drying and hard wearing acrylic marking paint, which is a lead and xylene free formulation used on concrete, tarmac, wood and composites.

Pocket sized makes it handy to use in many trades, but especially in the construction industry for surveying and road marking etc.

| Code      | Colour        | Size  | Carton Qty |
|-----------|---------------|-------|------------|
| PVNZFB5   | Fluor. Blue   | 500ml | 12         |
| PVNZFG5   | Fluor. Green  | 500ml | 12         |
| PVNZFO5   | Fluor. Orange | 500ml | 12         |
| PVNZFPIN5 | Fluor. Pink   | 500ml | 12         |
| PVNZFPUR5 | Fluor. Purple | 500ml | 12         |
| PVNZFY5   | Fluor. Yellow | 500ml | 12         |
| PVNZR5    | Red           | 500ml | 12         |
| PVNZW5    | White         | 500ml | 12         |
| PVNZY5    | Yellow        | 500ml | 12         |
| PVNZBLA5  | Black         | 500ml | 12         |



## MARKING PAINTS



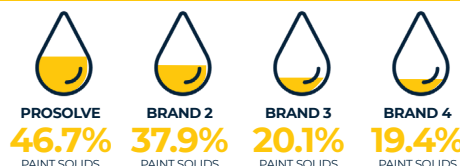
## SURVEY SPRAY PAINT AEROSOL

ProSolve® survey spray is a high quality, fast drying and hard wearing acrylic marking paint which is a lead and xylene free formulation, for use on concrete, tarmac, wood and composites. Used widely in many trades but especially in the construction industry for surveying and road marking etc. The unique spray head imparts a narrow spray pattern which will allow letters and numbers to be marked accurately and legibly.

| Code       | Colour       | Size  | Carton Qty |
|------------|--------------|-------|------------|
| PVSUFPIN7A | Fluo. Pink   | 750ml | 12         |
| PVSUFPUR7A | Fluo. Purple | 750ml | 12         |
| PVSUFB7A   | Fluo. Blue   | 750ml | 12         |
| PVSUFG7A   | Fluo. Green  | 750ml | 12         |
| PVSUF07A   | Fluo. Orange | 750ml | 12         |
| PVSUFR7A   | Fluo. Red    | 750ml | 12         |
| PVSUFY7A   | Fluo. Yellow | 750ml | 12         |
| PVSUW7A    | White        | 750ml | 12         |



### COMPARING PAINT PIGMENT SOLIDS



## MARKING PAINTS, STENCIL SPRAYS & STENCILS



### LINEMARKER PAINT AEROSOL

ProSolve® linemarker is a quick-drying and durable acrylic linemarking paint which is a lead and xylene-free formulation, for use on concrete, tarmac, wood and composites. Used widely in many industries for marking, surveying, road marking, car parks, tennis courts, golf courses, warehousing and any area requiring lines for demarcation.

| Code    | Colour | Size  | Carton Qty |
|---------|--------|-------|------------|
| PVLMW7A | White  | 750ml | 12         |
| PVLMY7A | Yellow | 750ml | 12         |
| PVLMR7A | Red    | 750ml | 12         |
| PVLMB7A | Blue   | 750ml | 12         |



### SHARP LINER PAINT AEROSOL

ProSolve® sharp liner marker is a high quality, fast drying and hard wearing acrylic marking paint, which is a lead and xylene free formulation. Available in a wide variety of colours, this product is utilised widely in many industries but especially for colour coding in the steel industry. Compatible with all ProSolve® paint applicators.

| Code       | Colour | Size  | Carton Qty |
|------------|--------|-------|------------|
| PVSHBLA6A  | Black  | 600ml | 12         |
| PVSHGREY6A | Grey   | 600ml | 12         |



### STENCIL SPRAY PAINT AEROSOL

ProSolve® stencil spray is a general purpose aerosol that is a fast drying, acrylic upright paint marker, making it suitable for interior and exterior use. This paint is intended primarily for industrial stencilling applications such as crate marking, box spraying and warehouse floor markings etc.

| Code   | Colour | RAL  | Size  | Carton Qty |
|--------|--------|------|-------|------------|
| SSB4   | Blue   | 5015 | 400ml | 12         |
| SSBLA4 | Black  | 9005 | 400ml | 12         |
| SSR4   | Red    | 3002 | 400ml | 12         |
| SSW4   | White  | 9003 | 400ml | 12         |
| SSY4   | Yellow | 1007 | 400ml | 12         |



### STENCILS

ProSolve® stencil kits are manufactured from 250 micron, durable polyester film. Each stencil is laser cut for accuracy and has a transparent, anti-reflective and abrasion resistant surface. If stencils are properly cared for, they can be used countless times making them very economical.

| Code    | Size | Details | Code    | Size | Details |
|---------|------|---------|---------|------|---------|
| SK20-9  | 2"   | 0-9     | SK2A-Z  | 2"   | A-Z     |
| SK40-9  | 4"   | 0-9     | SK4A-Z  | 4"   | A-Z     |
| SK60-9  | 6"   | 0-9     | SK6A-Z  | 6"   | A-Z     |
| SK120-9 | 12"  | 0-9     | SK12A-Z | 12"  | A-Z     |

## APPLICATORS



### HANDHELD LINEMARKER AEROSOL APPLICATOR

To be used with 750ml cans only.

Code BD1



### 2 WHEELED LINE- MARKER AEROSOL APPLICATOR

For use with both 600ml and 750ml cans.

Code BD2



### 4 WHEELED LINE- MARKER AEROSOL APPLICATOR

(COMPRISING OF A BD2 AND AN  
ADAPTOR)

For use with both 600ml and 750ml cans.

Code BD4



### SHARPLINER DELUXE 4 WHEELED LINE-MARKER AEROSOL APPLICATOR

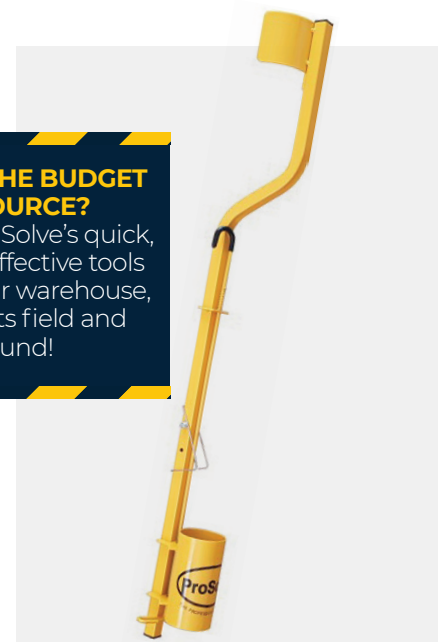
WITH EXTRA CAN STORAGE

For use with both 600ml and 750ml cans and includes height adjustment, enabling different width lines 50mm to 100mm.

Code SHA4

#### DON'T HAVE THE BUDGET TO OUTSOURCE?

Then rely on ProSolve's quick, easy and cost effective tools to mark out your warehouse, car park, sports field and playground!



### MARKING HANDLE AEROSOL APPLICATOR

Gives you that extra reach when you need it and assists in preventing back strain. Lightweight aluminium construction that improves efficiency and makes application less fatiguing. Can be used with both 400ml and 500ml aerosol cans.

Code BD5

## MAINTENANCE AEROSOLS

### 1 HEAVY DUTY ADHESIVE

Specially developed for effective use across a wide variety of products such as glass, rubber, wood, metals, foams and fabrics. It provides good instant grab properties and long term strength.

| Code | Size  | Carton Qty |
|------|-------|------------|
| HDA5 | 500ml | 12         |

### 2 SILVER ZINC

A tough, quick drying galvanising product used throughout industry to coat and give protection to bare metals and galvanised surfaces.

| Code  | Size  | Carton Qty |
|-------|-------|------------|
| SZG5A | 500ml | 12         |

### 3 MAINTENANCE SPRAY

An all purpose oil and solvent blend spray with a multitude of uses. ProSolve® maintenance spray penetrates, lubricates, cleans, protects and displaces moisture.

| Code     | Size  | Carton Qty |
|----------|-------|------------|
| MAINT55A | 500ml | 12         |



### 4 MASKING SPRAY

Specially formulated as a temporary road sign masking spray which durably resists all weather conditions. Whilst diversions or road works are in place, incorrect road sign information can be quickly and easily masked and when the work is completed, simply wipe off with a dry cloth leaving no resultant damage to the face of the sign. Note: The masking spray does not affect the reflectivity of the signs.

| Code | Size  | Carton Qty |
|------|-------|------------|
| M55  | 500ml | 12         |

### 5 SILICONE SPRAY

An exceptionally versatile, odourless lubricant that does not attract dust and dirt, with an excellent temperature range to 200°C. Excellent as a releasing agent in the rubber, plastic and fibreglass industries; prevents sticking to the moulds and cavities.

| Code   | Size  | Carton Qty |
|--------|-------|------------|
| SIL55A | 500ml | 12         |

### 6 BITUMEN COLD JOINT SEALER

An applied cold joint sealer for easy sealing around vertical joints. Vital to the performance of your work, edge sealing is a mandatory requirement for the Reinstatement of the Opening of Highways. Ideal for use when carrying out road pothole repair as it creates a solid adhesive bond between the concrete and asphalt surfaces.

| Code  | Size  | Carton Qty |
|-------|-------|------------|
| BITS7 | 750ml | 12         |

Note: Aerosols also sold individually.

### 7 EP2 CARTRIDGE

A multi-purpose premium quality lithium grease in a handy 400g cartridge. Lithium grease is excellent at working at high temperatures and is suitable for protection from corrosion and wear.

| Code | Description        | Carton Qty |
|------|--------------------|------------|
| EP2  | EP2 Cartridge 400g | 36         |

## BARRIER MESH



### HEAVY DUTY ORANGE BARRIER MESH

900mm x 30m

Premium barrier mesh with rigid plastic, ensuring a stronger and longer lasting performance. With just one roll of heavy duty orange barrier mesh and Y Posts (sold separately), you can have a temporary fence erected in minutes. Heavy duty mesh, ideal for long term applications or repetitive use.

| Code    | Colour | Size W x L                    |
|---------|--------|-------------------------------|
| HDBM30  | Orange | 900mm x 30m                   |
| XHDBM30 | Orange | 900mm x 30m (Xtra Heavy Duty) |



### ECONOMY BARRIER MESH 1m x 50m

ProSolve® barrier safety fencing mesh is an extruded barrier mesh for cordoning off areas both indoors and outdoors.

It is available in blue, green, orange and yellow. ProSolve® safety fence is easy to erect using steel fencing pins and provides higher visibility and strength than standard barrier tapes.

| Code        | Colour | Size W x L |
|-------------|--------|------------|
| BARFENB/PSS | Blue   | 1m x 50m   |
| BARFENG/PSS | Green  | 1m x 50m   |
| BARFENO/PSS | Orange | 1m x 50m   |
| BARFENY/PSS | Yellow | 1m x 50m   |

## TEMPORARY FENCING



### TEMPORARY FENCING

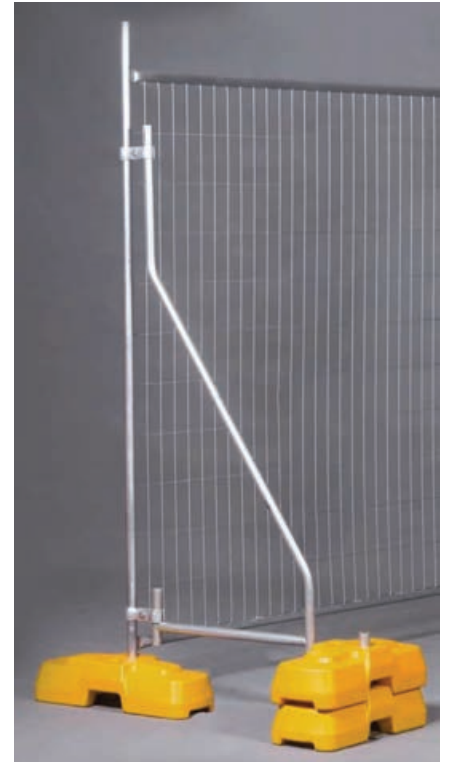
2400mm length x 2100mm height

A highly effective temporary fencing solution / safety barrier for your construction site, event, or public area. Our durable and reliable temporary fences ensure enhanced safety and control, providing a sturdy boundary that protects both workers and the public. Trust in our premium barrier fencing options to keep your project on track and safeguarded.

Whether your requirement involves security, storage, or crowd control at events, the strong and durable site fencing can easily be transported and set up quickly with each panel only weighing 14kg which includes the 32mm Galvanised Frames and 2.5mm Galvanised Anti-Climb Mesh with welded plates at each corner for extra strength.

Components can be purchased separately from ProSolve® such as feet, couplers, panels, and supports.

Code PVTF2000



### TEMPORARY FENCE SUPPORT

The support fits neatly into the fence panel and acts as a brace to provide greater stability to the temporary fence line.

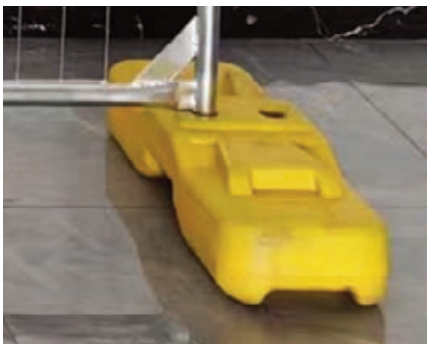
Code PVTFSUPPORT



### HEAVY DUTY FENCE COUPLER 32mm

Used to ensure that temporary fence panels remain continuous and secure, as temporary fencing can only work effectively when assembled safely. The couplers are manufactured from steel and are incredibly durable.

Code PVTFCOUP



### TEMPORARY FENCE CONCRETE FILLED BLOCK

Designed to hold temporary mesh fencing upright. Manufactured from plastic and filled with concrete, our fence feet are robust and provide an incredibly sturdy base.

Code PVTFBLOCK



## CONSTRUCTION BARRIER



### CONSTRUCTION BARRIER

2.2m length x 1.25m height

Crowd control and site barriers, ideal solution for maintaining order and safety at any construction site or event. With robust construction, bright orange diamond mesh and easy setup, these barriers provide a reliable boundary to manage crowds effectively and prevent unauthorised access to all your restricted areas.

Featuring flat fleet that minimises the risk of trip hazards, plus it is detachable making it easy and quick to store. The fencing is fully galvanised which extends its outdoor life making it more durable.

Code PVCONSTBARR

### CONSTRUCTION BARRIER FOOT

Metal feet stabilise and secure our construction barrier / control barriers. Made from galvanised steel, they are tough and easy to install.

Code PVCONSTBARRFT



### CONSTRUCTION BARRIER PIN

Simply and effectively locks together construction barriers providing a stable and secure structure.

Code PVCONSTBARRPIN



## SANDBAGS / FLAGGING



### SANDBAGS

| Code        | Size (W x L)  |
|-------------|---------------|
| PVPFSANDBAG | 830mm x 340mm |
| PVHSANDBAG  | 300mm x 450mm |

**TO ORDER**  
**CALL 09 218 5566** (Auckland) /  
**03 925 8217** (Christchurch)



### FLAGS

30m orange bunting with strong rope line. Perfect for marking out temporary and hazardous areas.

| Code        | Length | Qty |
|-------------|--------|-----|
| FLAGGINGO30 | 30m    | 1   |

## FLAG MARKER



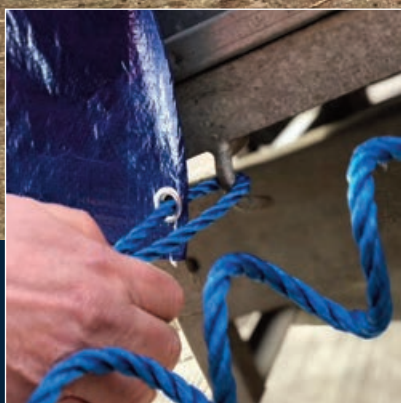
- High visibility (the flags move without hardly any wind)
- Bright or fluorescent colours
- Easily put into place by hand
- Easy to transport
- Rot proof and weather proof
- Economical (inexpensive and can be reused)



| Code | Colour        | Size (H x W x L)  | Bundle |
|------|---------------|-------------------|--------|
| FMB0 | Bright Orange | 101 x 127 x 530mm | 50     |
| FMBP | Bright Pink   | 101 x 127 x 530mm | 50     |
| FMBY | Bright Yellow | 101 x 127 x 530mm | 50     |
| FMB  | Blue          | 101 x 127 x 530mm | 50     |
| FMG  | Green         | 101 x 127 x 530mm | 50     |
| FMR  | Red           | 101 x 127 x 530mm | 50     |
| FMW  | White         | 101 x 127 x 530mm | 50     |

**PROSOLVE® STAKES & PEGS SEE PAGE 04**

ROPE



NO-QUIBBLE  
GUARANTEE



POWERFUL  
BRAND

## ROPE

This quality ProSolve® polypropylene (poly) rope is a 3-strand construction split film twisted rope used in numerous industries (including hauling) for securing, tying, barriers etc. It will not rot and is resistant to mildew and chemicals; polypropylene rope also floats.

| Code      | Colour | Width | Length |
|-----------|--------|-------|--------|
| RPB6/220  | Blue   | 6mm   | 220m   |
| RPB6/500  | Blue   | 6mm   | 500m   |
| RPB8/220  | Blue   | 8mm   | 220m   |
| RPB10/220 | Blue   | 10mm  | 220m   |



## FORM SHUTTERING

### PRO-FORM SHUTTERING

Form Plastic Board offers smooth concrete surface and the most cost-saving solution for any shuttering activities, especially when you calculate the average cost into per time use. They can be applied to all wall, column and slab shuttering projects.

- New generation, the most economic shuttering solution, longer service life with lower cost per use
- Good and ideal replacement of conventional film faced plywood
- Better concrete finish than the regular marine board, no release agent required
- Recyclable and environmental friendly, can be used in both tropical or cold areas during concreting
- Versatile use in formwork system in both girder system and framed system

| Code             | Description                                        |
|------------------|----------------------------------------------------|
| PVPF20X100X5800  | Pro-Form Reusable Form Work 20mm x 100mm x 5800mm  |
| PVPF20X300X2400  | Pro-Form Reusable Form Work 20mm x 300mm x 2400mm  |
| PVPF20X300X5800  | Pro-Form Reusable Form Work 20mm x 300mm x 5800mm  |
| PVPF20X600X2400  | Pro-Form Reusable Form Work 20mm x 600mm x 2400mm  |
| PVPF20X900X2400  | Pro-Form Reusable Form Work 20mm x 900mm x 2400mm  |
| PVPF20X1200X2400 | Pro-Form Reusable Form Work 20mm x 1200mm x 2400mm |



Flexible Design



Pins

Pin c/w Predrilled Holes

### ROAD / BOXING PINS

ProSolve® road / boxing pins are durable round steel pins with a point at one end to allow easy penetration of tough ground conditions. These pins have been specifically designed for use with (fixed and rigid) road forms. Road pins are designed to hold the road form in perfect position while concrete is drying. Available in singles.

| Code    | Diameter | Length | Multiples Of |
|---------|----------|--------|--------------|
| RP11000 | 16mm     | 1000mm | 10           |
| RP11200 | 16mm     | 1200mm | 10           |
| RP21000 | 20mm     | 1000mm | 10           |
| RP21200 | 20mm     | 1200mm | 10           |

#### Road Pins c/w Predrilled Holes

|         |      |       |    |
|---------|------|-------|----|
| RP1450H | 17mm | 450mm | 10 |
| RP1600H | 17mm | 600mm | 10 |
| RP1900H | 17mm | 900mm | 10 |



**FOR MORE INFORMATION / PRICING PLEASE GET IN TOUCH**

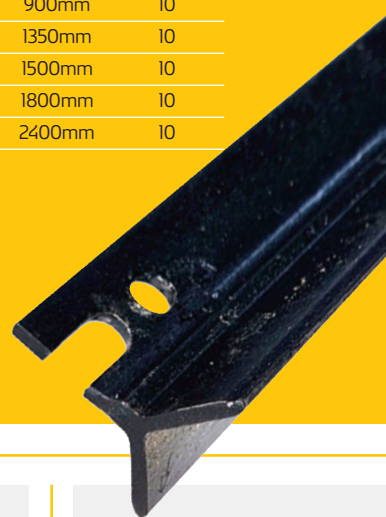
## WARATAHS / Y POSTS & ACCESSORIES



### Y POSTS

These top quality Y Posts have a tapered end for easy installation and a plain head which makes it easy to hammer the post into the ground. Anti-rust material, coated surface and can withstand the extreme weather and high wind forces.

| Code   | Length | Bundles |
|--------|--------|---------|
| YP500  | 500mm  | 10      |
| YP600  | 600mm  | 10      |
| YP900  | 900mm  | 10      |
| YP1350 | 1350mm | 10      |
| YP1500 | 1500mm | 10      |
| YP1800 | 1800mm | 10      |
| YP2400 | 2400mm | 10      |



**NEW DESIGN**

### Y POST / REBAR CAPS

ProSolve® Y Post / rebar caps provide a snug fit to most fence posts. Holes in the caps to easily tie to posts with cable ties for an extra hold. Available in a bright yellow finish for visibility and safety.

| Code   | Qty         |
|--------|-------------|
| YPCAPY | Bags of 100 |



### POST & STAKE RAMMER

A top quality post & stake rammer, manufactured from galvanised steel and used widely for driving Steel Y Posts / Waratahs and wooden stakes into the ground.

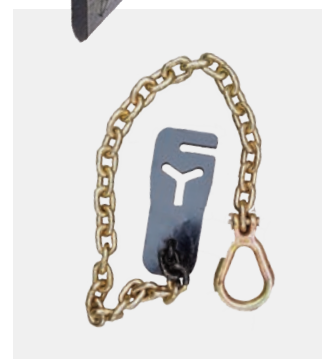
| Code  | Qty |
|-------|-----|
| YPRAM | 1   |



### Y POST LIFTER / REMOVER

An easy, hassle-free way of extracting Y Posts on site.

| Code       | Qty |
|------------|-----|
| PVYPLIFTER | 1   |



### POST PULLER CHAIN

- Remove steel and timber posts with ease
- Attaches to digger buckets for easy post removal
- Heavy duty

| Code     | Qty |
|----------|-----|
| PVPOSTCH | 1   |

**MARKING PAINTS SEE PAGE 10**

## DEBRIS NETTING



### DEBRIS NETTING / SHADE CLOTH

ProSolve® debris netting / shade cloth is manufactured from UV stabilised polyethylene monofilaments which provides an open mesh netting. Mainly used on scaffolding to keep any rubbish or debris contained on a building site, it improves site safety by reducing the risk of objects falling outside the working area. The containment of debris creates a safer working environment to workers and the general public.



| Code       | Colour | Size W x L |
|------------|--------|------------|
| DNB2X50R   | Blue   | 2m x 50m   |
| DNG2X50R   | Green  | 2m x 50m   |
| DNR2X50R   | Red    | 2m x 50m   |
| DNBLA2X50R | Black  | 2m x 50m   |
| DNW2X50R   | White  | 2m x 50m   |



**FOR OUR FULL GEOTEXTILES RANGE - SEE PAGE 26**

## SILT DRAINAGE / LAYFLAT HOSE



### DRAIN CATCHER / DRAIN WARDEN

A very simple yet effective measure for preventing silt run-off and rubbish from entering the storm water system. Leave inserted as a short term collection device. Very easy to fit - just cut to suit your drain size. Easy to service.

| Code     | Qty |
|----------|-----|
| PVDCATCH | 1   |



### DRAIN COIL

Our 110mm drain coil lengthens the service life of drainage systems by filtering out silt and sand. ProSolve® drain coil incorporates the strength of a corrugated outer wall and a smooth inner wall to provide optimal flow and unsurpassed resistance to abrasion and corrosion. All drain coils come complete with socks.

| Code          | Size W x L   | Qty |
|---------------|--------------|-----|
| PVDCPI5X110S  | 110mm x 15m  | 1   |
| PVDCP30X110S  | 110mm x 30m  | 1   |
| PVDCPI00X110S | 110mm x 100m | 1   |



## LAYFLAT HOSE AND FITTINGS

| Code               | Blue LD Layflat Hose Kits |
|--------------------|---------------------------|
| PVLAYFLATKIT38.20M | 38mm x 20m W Camlocks     |
| PVLAYFLATKIT50.20M | 50mm x 20m W Camlocks     |
| PVLAYFLATKIT50.25M | 50mm x 25m W Camlocks     |
| PVLAYFLATKIT75.25M | 75mm x 25m W Camlocks     |

| Code            | Blue LD Layflat Roll Rates    |
|-----------------|-------------------------------|
| PVPBLF025S-ROLL | 25mm (1") 7 Bar Std. Duty     |
| PVPBLF032S-ROLL | 32mm (1 1/4") 6 Bar Std. Duty |
| PVPBLF038S-ROLL | 38mm (1 1/2") 5 Bar Std. Duty |
| PVPBLF051S-ROLL | 51mm (2") 4.5 Bar Std. Duty   |
| PVPBLF076S-ROLL | 76mm (3") 4 Bar Std. Duty     |
| PVPBLF102S-ROLL | 102mm (4") 4 Bar Std. Duty    |
| PVPBLF152S-ROLL | 152mm (6") 3 Bar Std. Duty    |

| Code            | Red HD Layflat Hose Kits      |
|-----------------|-------------------------------|
| PVAS-LFR076.25C | 76mm (3") x 25m c/w Camlocks  |
| PVAS-LFR102.25C | 102mm (4") x 25m c/w Camlocks |
| PVAS-LFR152.20C | 152mm (6") x 20m c/w Camlocks |

| Code             | Red HD Layflat Roll Rates  |
|------------------|----------------------------|
| PVPBLFR051H-ROLL | 51mm (2") 10.5 Bar H/Duty  |
| PVPBLFR076H-ROLL | 76mm (3") 10.5 Bar H/Duty  |
| PVPBLFR102H-ROLL | 102mm (4") 10.5 Bar H/Duty |
| PVPBLFR152H-ROLL | 152mm (6") 7 Bar H/Duty    |
| PVPBLFR203H-ROLL | 203mm (8") 6 Bar H/Duty    |

## SILT ACCESSORIES



### HOG RINGS

These galvanised hog rings provide a quick and easy solution to fastening barrier and wire mesh to wire supports.

| Code      | Qty     |
|-----------|---------|
| PVHOGRING | 1 (box) |



### HOG RING TOOL

Attaches hog rings quickly, safely and hassle-free.

| Code     | Qty |
|----------|-----|
| PVHRTOOL | 1   |



### BUTTERFLY CLIPS

A fast and easy way to secure your silt fence / shade fabric to wire cable, rope and fencing mesh. Gripping teeth holds fabric tight to ensure a secure attachment. Easy-to-use design.

| Code       | Qty |
|------------|-----|
| PVBUTTCLIP | 200 |



### WIRE STRAINERS

An excellent quality ratchet wire strainer for tensioning support wires.

| Code       | Qty |
|------------|-----|
| PVPWIRESTR | 1   |

## TO ORDER

**CALL 09 218 5566 (Auckland) / 03 925 8217 (Christchurch)**  
**EMAIL [sales.nz@prosolveproducts.com](mailto:sales.nz@prosolveproducts.com)**



### COILS OF WIRE - 2.5mm

ProSolve® 2.5mm galvanised wire is used in many areas on site for holding up silt fences, barrier mesh etc.

| Code       | Description  | Size        | Qty |
|------------|--------------|-------------|-----|
| PV2.5HTW26 | High Tensile | 2.5m x 300m | 1   |
| PV2.5SW30  | Low Tensile  | 2.5m x 300m | 1   |



### CABLE TIES

Industrial quality, made from high quality nylon for strength and durability. Minimum tensile strength of 22kgs. Also known as zip ties or tie wraps.

| Code        | Size (thickness x length) | Pack | Qty |
|-------------|---------------------------|------|-----|
| PVCT4.8-300 | 4.8mm x 300mm             | 100  | 1   |
| PVCT9.0-600 | 9mm x 600mm               | 100  | 1   |

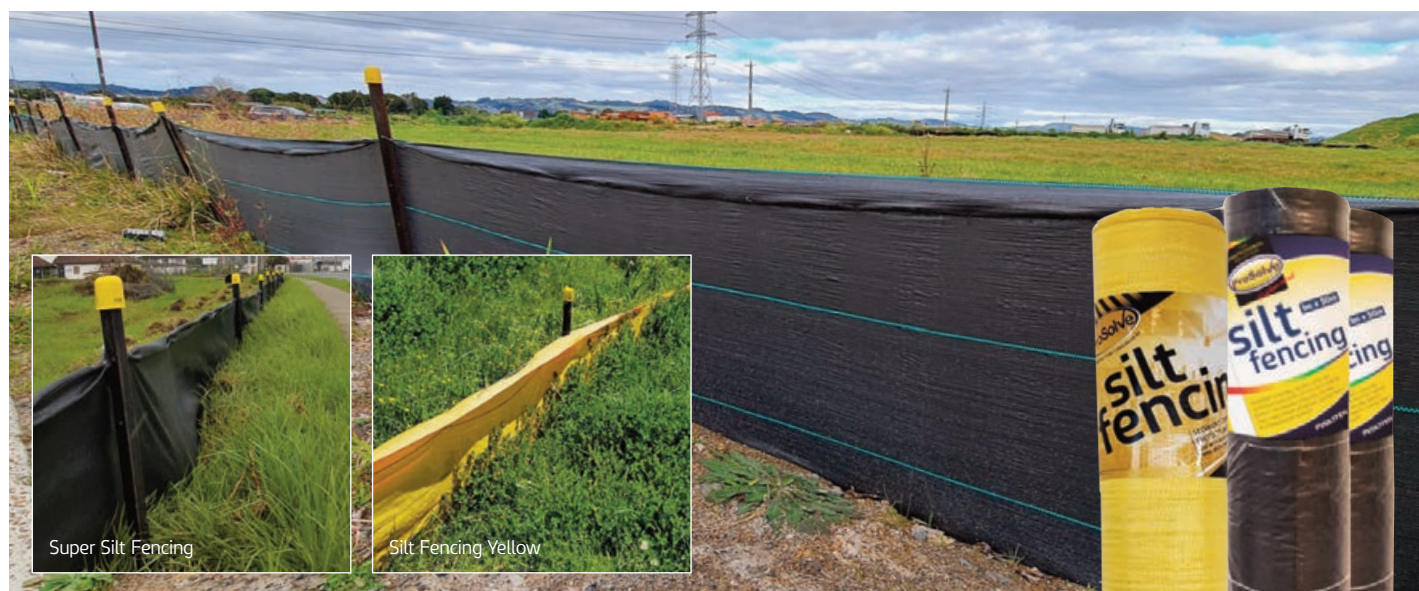


### TIE WIRE 1kg BUNDLE

| Code      | Qty |
|-----------|-----|
| PVTIEWIKG | 1kg |



## SILT FENCING & ACCESSORIES



### SILT & SUPER SILT FENCING

ProSolve® silt fence is a sediment control device used on construction sites to protect water quality in nearby streams, rivers and lakes from sediment (loose soil) in stormwater runoff. ProSolve® super silt fence is a double layer silt fence with marker stripes to indicate embedment depth for easy installation. Use with ProSolve® galvanised wire mesh for strength. ProSolve® new yellow silt fence is ideal for where high visibility is required.

| Code    | Description         | Size (W x L) | Qty |
|---------|---------------------|--------------|-----|
| PVSILT  | Silt Fencing        | 1m x 100m    | 1   |
| PVSILTY | Silt Fencing Yellow | 1m x 100m    | 1   |
| PVSSILT | Super Silt Fencing  | 1.3m x 50m   | 1   |



### SILT SOCKS EMPTY & PRE-FILLED

Achieve the ultimate protection for cesspits and inlets with ProSolve® silt sock pre-filled 4M geotextile tube. The device is quick and easy to install and is highly effective at arresting sediment prior to entering the storm water system.

| Code        | Type                    | Qty |
|-------------|-------------------------|-----|
| PVSSOCK4M   | 4m Empty Silt Sock      | 1   |
| PVSSOCKPF4M | 4m Pre-Filled Silt Sock | 1   |
| PVSSOCKPF2M | 2m Pre-Filled Silt Sock | 1   |



### SILT FENCE PINS

75mm pin for securing silt fence.

| Code       | Qty |
|------------|-----|
| SILTFENPIN | 100 |



### GALVANISED WIRE MESH 1000mm x 50m

Used along with ProSolve® super silt fence for extra strength and durability.

| Code    | Qty |
|---------|-----|
| PVGALWM | 1   |

## GEOTEXTILES

Our ProSolve® nonwoven geotextiles provide a consistent, high-quality performance and products will retain their strength and durability over decades. They assist in making landfills, walls, roads, rail and other structures last a lot longer than what was possible without geosynthetics. With our vast range of products and exceptional service we have become a 'go-to' for these products across New Zealand.



### WE CAN SUPPLY OUR PRODUCTS TO ANYWHERE IN NEW ZEALAND

**CALL** 09 218 5566 (Auckland) / 03 925 8217 (Christchurch)  
**EMAIL** [sales.nz@prosolveproducts.com](mailto:sales.nz@prosolveproducts.com)

ProSolve® supply high quality non-woven geotextiles, suitable for all reinforcement applications such as drainage, separation, filtration etc

#### Reinforcement

Geotextiles can provide reinforcement of soil, ensuring its stability, such as stabilising soft soils on new embankments.

#### Drainage

Non-woven geotextiles provide excellent drainage when they are used as an integral part of a drainage system.

#### Separation

Non-woven geo-products are typically used as a barrier between soft ground and a fill material, this reduces the amount of fill required and ultimately increases the lifespan of the road or rail structure.

#### Geotextile and Construction Accessories

ProSolve® supply a wide range of Ground Protection and Construction Consumables.



### NON-WOVEN GEOCLOTH

Manufactured from the extrusion of fibres which are laid down on a manufacturing 'bed' and then needle punched. This manufacturing process allows for the use of non-woven geocloth in applications such as drainage, filtration or ground protection.

| Code       | Class | Size      | Qty |
|------------|-------|-----------|-----|
| PV14-4-100 | A     | 4m x 100m | 1   |
| PV14-6-100 | A     | 6m x 100m | 1   |
| PV19-4-100 | B     | 4m x 100m | 1   |
| PV19-6-100 | B     | 6m x 100m | 1   |
| PV29-4-100 | C     | 4m x 100m | 1   |
| PV29-6-100 | C     | 6m x 100m | 1   |
| PV39-4-050 | D     | 4m x 50m  | 1   |

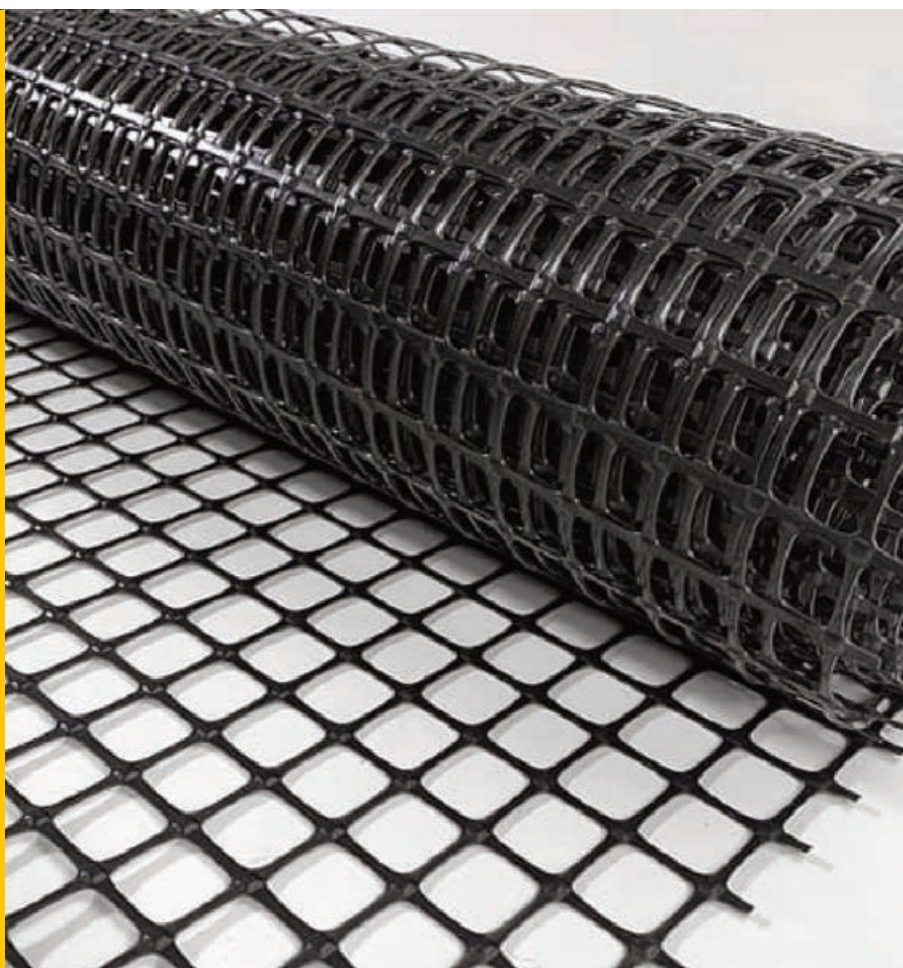


## GEOGRID / ENVIROPRO

### GEOGRID

Our ProSolve® geogrids can be used to reduce the layer thicknesses in road pavements, increase pavement life and reduce maintenance (reducing costs). They can also be used to reinforce soil, allowing the construction of soil walls, slopes and embankments.

| Code        | Size (Roll) |
|-------------|-------------|
| PVGG20/20   | 3.95m x 50m |
| PVGG30/30   | 3.95m x 50m |
| PVGG40/40   | 3.95m x 50m |
| PVGG20/20/6 | 6.00m x 50m |



### ENVIROPRO

The black Enviropro does not reflect the sunlight like the standard white geotextiles and also blends into the site environment.

This comes in 4m x 50m rolls making it easy for our customers to handle on site. ProSolve® 130mm or 230mm Ground Staples can be used for securing Enviropro to the ground.

| Code      | Size     |
|-----------|----------|
| ENVIROPRO | 4m x 50m |

## FLOC CONTAINER / HESSIAN ROLL



### FLOC CONTAINER

The Floc Container is designed to replicate the exact principals of the TP90 rainfall activated shed to chemically dose sediment retention ponds. Weighing in at just 45kg prior to the addition of chemicals, the Floc Container is made of a high quality medium density polyethylene complete with a high spec UV package. Its weight means that it is very easy to install and relocate on site. The unit provides a treatment solution for DEBs right through to 4-5 hectare catchments.

The inclusion of an adjustable tray allows for simple setting and adjustment of chemical dose rate. A series of pre-set header tank holes and caps allow for easy setup and alteration of the low flow, high flow drains and pre dosing storage. Further innovations have allowed for system recharge with an access bung for rainwater removal and chemical recharge with 18mm hose fittings, eradicating the risk of unwanted spills. **Unit sizes: 75L, 200L, 400L**



Flocculant also available in 200ltr and 1000ltr

**FOR MORE INFORMATION / PRICING PLEASE GET IN TOUCH**

### HESSIAN ROLL 1.8m x 50m

Hessian roll made from 100% natural hessian and is 100% biodegradable. It can be used to protect mortar, new brickwork, and concrete from bad weather and frost. Suitable for all weather conditions, and breathable to ensure that mortar and concrete is still allowed to breath, and dry more naturally.

Code PVHESSI.8X50



## COIR MATTING / FILTER FABRIC / SILT FENCING



### COIR MATTING

Biodegradable erosion control coir matting incorporating a jute thread.

| Code       | Description                   |
|------------|-------------------------------|
| PVCOIR300J | Coir Matting 300GSM with Jute |
| PVCOIR450J | Coir Matting 450GSM with Jute |



### FILTER FABRIC

ProSolve® filter fabric is a non-woven, needle punched fabric used to prevent soil and silt from clogging drains - used in the civil, drainage and environmental industries.

| Code     | Size     | Qty |
|----------|----------|-----|
| PVFF2-50 | 2m x 50m | 1   |

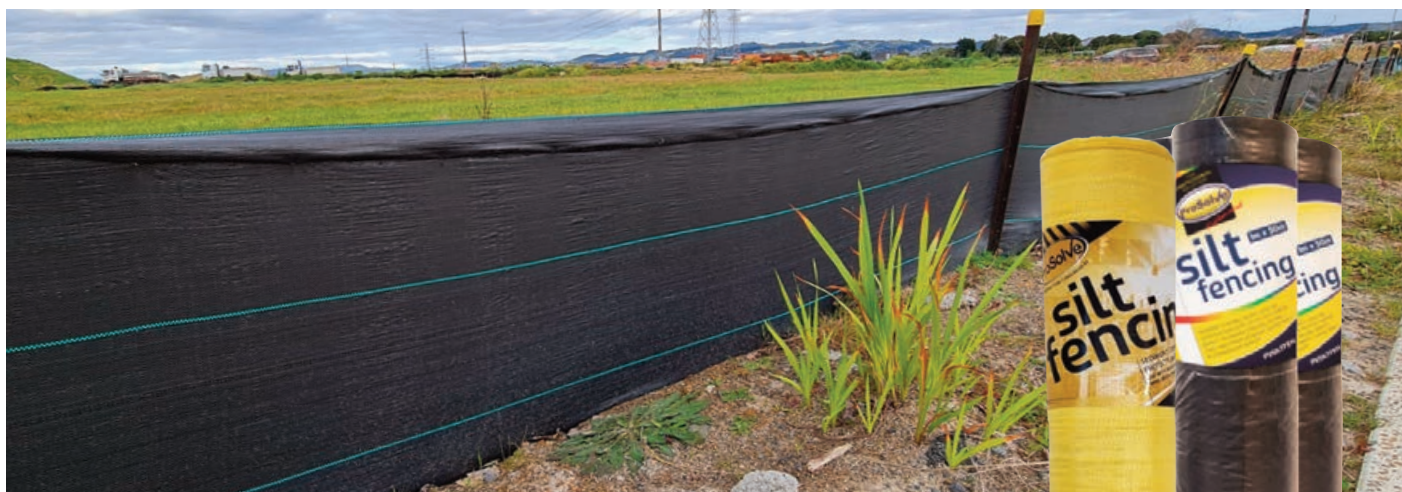


### GROUND STAPLES

ProSolve® ground staples are ideal for holding down geotextiles, weed matting and many other ground coverings. They can be easily knocked into the ground using a mallet or hammer.

| Code        | Length | Carton Qty |
|-------------|--------|------------|
| PVSTAPLE130 | 130mm  | 200        |
| PVSTAPLE230 | 230mm  | 200        |

**SILT ACCESSORIES - SEE PAGE 24**



## SILT & SUPER SILT FENCING

ProSolve® silt fence is a sediment control device used on construction sites to protect water quality in nearby streams, rivers and lakes from sediment (loose soil) in stormwater runoff. ProSolve® super silt fence is a double layer silt fence with marker stripes to indicate embedment depth for easy installation. Use with ProSolve® galvanised wire mesh for strength. ProSolve® new yellow silt fence is ideal for where high visibility is required.

| Code    | Description         | Size (W x L) | Qty |
|---------|---------------------|--------------|-----|
| PVSILT  | Silt Fencing        | 1m x 100m    | 1   |
| PVSILTY | Silt Fencing Yellow | 1m x 100m    | 1   |
| PVSSILT | Super Silt Fencing  | 1.3m x 50m   | 1   |



## PENS & CRAYONS



### PERMANENT MARKERS

Water resistant, bullet point permanent markers, containing non-toxic ink and are fade resistant. Available in chisel tip and fine tip.

| Code | Type       | Colour | Carton Qty |
|------|------------|--------|------------|
| PMFT | Fine Tip   | Black  | 12         |
| PMCT | Chisel Tip | Black  | 12         |



### VALVE ACTION MARKERS

ProSolve® valve action markers are manufactured for all industries for marking all types of metals and are suitable for other surfaces such as glass, plastic, cardboard, ceramic and leather. ProSolve® valve action paint marker dries quickly, is water resistant and has a permanent lacquer type finish.

| Code    | Colour | Size | Carton Qty |
|---------|--------|------|------------|
| PVAMW   | White  | 12ml | 12         |
| PVAMY   | Yellow | 12ml | 12         |
| PVAMBLA | Black  | 12ml | 12         |
| PVAMR   | Red    | 12ml | 10         |



### ARTLINE MARKERS

An excellent all-purpose marker that is suitable for all types of permanent marking. Convenient to use for a long period of time without replacing the cap.

- Ink becomes permanent when dry
- Cap can be left off for up to 14 days without drying out
- Fast drying alcohol based dry safe ink
- Low odour
- Ink is xylene free
- ROHS Compliant

| Code      | Type             | Colour | Carton Qty |
|-----------|------------------|--------|------------|
| ART170BLK | 2mm Fine Tip     | Black  | 12         |
| ART190BLK | 2-5mm Chisel Tip | Black  | 12         |



### TIMBER CRAYONS

ProSolve® timber crayons are designed for marking all types of lumber. These marking crayons are durable, weatherproof and colour intense.

| Code    | Colour | Size (mm) | Carton Qty |
|---------|--------|-----------|------------|
| TCBLASA | Black  | 120 x 13  | 12         |
| TCBSA   | Blue   | 120 x 13  | 12         |
| TCGSA   | Green  | 120 x 13  | 12         |
| TCRSA   | Red    | 120 x 13  | 12         |
| TCWSA   | White  | 120 x 13  | 12         |
| TCYSA   | Yellow | 120 x 13  | 12         |

## PADS



## FIELD BOOKS &amp; COVER

Top quality field books which come in either standard or waterproof paper. Both types can be written on with a standard ball point pen or pencil. PVC covers to fit the FIELDBOOK and WPFIELDBOOK. Comes with front and back cover with two brass studs to bolt the cover, pad and back together. Cover flips upwards and has a heavier backing PVC to make writing in the field easier.

| Code        | Description | No. of Pages | Qty |
|-------------|-------------|--------------|-----|
| FIELDBOOK   | Standard    | 100          | 1   |
| WPFIELDBOOK | Waterproof  | 50           | 1   |
| FIELDBKCOV  | PVC Cover   | -            | 1   |



## LEVEL BOOKS

ProSolve® level books are manufactured from a weather resistant rag bond paper with a high cotton content for tear resistance when wet. The book has a wipe clean cover which means it folds flat for easy use and retains strength, even after being subjected to adverse weather conditions.

| Code       | Description                      | Qty |
|------------|----------------------------------|-----|
| LEVELBK100 | Markrite Level Book 100          | 1   |
| LEVELBK101 | Markrite Level Book 101          | 1   |
| LEVELBKHOC | Height of Collimation Level Book | 1   |



## AQUA NOTEPADS

Aqua notepads are waterproof which make them perfect for use in wet weather or external use on site where standard paper would easily get damp. The lightly waxed paper means grease or mud marks can be easily wiped off. Available in small, medium, large and extra-large.

| Code        | Description        | Dimensions | Qty |
|-------------|--------------------|------------|-----|
| AQS75/115   | Small Top Bound    | 75x115mm   | 1   |
| AQM100/150  | Med Top Bound      | 100x150mm  | 1   |
| AQL120/180  | Large Side Bound   | 120x180mm  | 1   |
| AQXL210/290 | X-Large Side Bound | 210x290mm  | 1   |



## FIELD BOOK

- 180mm x 120mm
- Lined paper
- Level book, rise & fall
- 50 leaves

| Code        | Description | No. of Pages | Qty |
|-------------|-------------|--------------|-----|
| PVR/FWPBOOK | Lined Paper | 50           | 1   |

**MARKING PAINTS SEE PAGE 10**  
**FLAGGING TAPE SEE PAGE 38**



## DETECTABLE MESH

### 100m x 230mm

ProSolve® detectable mesh is a coloured plastic mesh that assists in detecting and marking buried underground cables, pipes, ducts and other services.

The product is manufactured in a high-strength, rot resistant HDPE material, it incorporates a stainless-steel wire, allowing it to be detected even when buried. ProSolve® Detectable Mesh carries a repeated printed warning message allowing for easy visual identification when excavating cables.

The durable mesh can be used together with cable and pipe locator tools to ensure that underground utilities are not affected during excavation works.

| Code         | Type              | Colour | Carton Qty |
|--------------|-------------------|--------|------------|
| PVMESHELECT  | Electric Cable    | Yellow | 4          |
| PVMESHFIBREO | Fibre Optic Cable | Green  | 4          |
| PVMESHGAS    | Gas Main          | Yellow | 4          |
| PVMESHSEWER  | Sewer Pipe        | Red    | 4          |
| PVMESHWATER  | Water Pipe        | Blue   | 4          |





## WASHROOM / TARPAULINS



**NEW DESIGN**

### SHOE CLEANERS

Excellent for site offices. Sturdy and can be fixed to the ground.

| Code    | Qty |
|---------|-----|
| PVSHCLR | 1   |



### RAGS

10kg bag of mixed rags.

| Code     | Qty |
|----------|-----|
| PVRAGS10 | 1   |



### RUBBLE SACKS

ProSolve® rubble sacks are high strength, puncture resistant, polythene bags which have been manufactured to cope with tough, demanding clean-ups. The bags are ideal for holding rubble, bricks, plaster and sand.

| Code  | Description           | Qty        |
|-------|-----------------------|------------|
| PVRS  | Rubble Sack           | Roll of 10 |
| PVRS1 | Rubble Sack - Singles | Single     |



## ALL WEATHER TARPAULINS

These all-purpose ProSolve® tarpaulins are lightweight (80gsm), waterproof, rotproof and tear resistant, with reinforced hems for extra strength and rustproof eyelets.

| Code      | Size W x L | Weight | No. of Eyelets |
|-----------|------------|--------|----------------|
| PVTARP2X3 | 2m x 3m    | 80gsm  | 10             |
| PVTARP3X4 | 3m x 4m    | 80gsm  | 14             |
| PVTARP4X5 | 4m x 5m    | 80gsm  | 18             |
| PVTARP4X7 | 4m x 7m    | 80gsm  | 22             |
| PVTARP7X9 | 7m x 9m    | 80gsm  | 32             |



## RATCHETS



### 6M RATCHET STRAP / TIE DOWN

Produced from 100% polyester, these endless ratchet straps have a safe working load (SWL) of 2000kg (2 TON) / (2500KG BS). Suitable for domestic and light commercial use. Used for securing / lashing and fastening lighter loads. Comes with medium-duty claw hooks in a two-part assembly. Quick-release mechanism for easy use. Our ratchets conform to EN12195-2:2001, to ensure safety and performance. 35mm width webbing.

| Code      | Item                                             |
|-----------|--------------------------------------------------|
| BDVI589CP | Ratchet Strap 35mm x 6m x 2000kg RAS (2500kg BS) |

### 10M RATCHET STRAP / TIE DOWN

10m x 50mm ratchet straps with wide polyester webbing and a claw hook at each end. Includes a shorter than usual ratchet strap part (250mm), perfect for low heavy loads where the typical 0.5m ratchet webbing would be on a corner. The heavy-duty claw hook ratchet lashing is a two-part assembly with a 5000kg rated break force. It features: a paddle handle ratchet, claw hook end fittings and is produced using high-quality polyester webbing.

| Code      | Item                                                     |
|-----------|----------------------------------------------------------|
| BDVI627CP | Ratchet Strap 10m x 5000kg WEB (4000kg RAS) - 250mm Tail |



### CARDED RATCHET STRAP PACK

A range of ratchet blister packs suitable for the retail environment.

| Code      | Item                                    | Qty |
|-----------|-----------------------------------------|-----|
| BDVI571BP | 2 Ratchet Straps 25mm x 5m x 1000kg RAS | 1   |
| BDVI714BP | 4 Ratchet Straps 25mm x 5m x 750kg RAS  | 1   |



**TO ORDER**  
**CALL 09 218 5566 (Auckland) /**  
**03 925 8217 (Christchurch)**  
**E sales.nz@prosolveproducts.com**



**NO MINIMUM  
ORDER QUANTITY**



**NO-QUIBBLE  
GUARANTEE**

## POLYTHENE



## POLYTHENE

A high impact, high performance, multilayer under slab damp proof film designed to retard moisture migration through concrete slabs and concrete walls to protect the structure from:

**Mould:** Reduces condensation within a structure, impeding the growth of moulds, mildews and fungi.

**Moisture:** Protects flooring materials by maintaining moisture levels well below the requirements of E 2 External Moisture.

| Code            | Colour | Size                 | Qty |
|-----------------|--------|----------------------|-----|
| PVBLKPL4X25X250 | Black  | 4m x 25m x 250micron | 1   |
| PVBLKPL4X50X250 | Black  | 4m x 50m x 250micron | 1   |
| PVCLRPL4X50X125 | Clear  | 4m x 50m x 125micron | 1   |
| PVORAPL4X25X300 | Orange | 4m x 25m x 300micron | 1   |



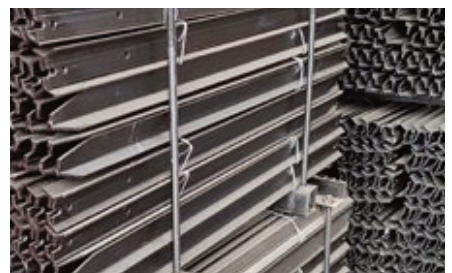
## BAR CHAIRS

| Code      | Size  | Qty         |
|-----------|-------|-------------|
| PVBC25/40 | 25/40 | 100 per Bag |
| PVBC50/65 | 50/65 | 100 per Bag |
| PVBC75/90 | 75/90 | 100 per Bag |



## TIE WIRE 1kg BUNDLE

| Code      | Qty |
|-----------|-----|
| PVTIEWIKG | 1kg |



**WARATAHS**  
SEE PAGE 21

**JOINING TAPE /  
PVC DUCT TAPE**  
SEE PAGE 38

## JOINTING STRIPS / FOAM / REBAR CAPS



### BITUMEN JOINTING STRIPS

ProSolve® bitumen jointing strips have an excellent adhesion and strength and can be applied cold (no need for a burner).

| Code    | Size             | Carton Qty |
|---------|------------------|------------|
| PVBJ560 | 12mm x 60mm x 6m | 4          |
| PVBJ580 | 12mm x 80mm x 6m | 3          |



### CONCRETE EXPANSION JOINT FOAM

An expansion joint filler for expansion / isolation joints in poured insitu concrete related construction. It provides a permanent barrier. Suitable for use where driveways or pavements meet buildings, retaining walls and all other concrete structures. It is self-adhesive and is incredibly easy-to-use. It is light, flexible and easily cut on-site with a knife.

| Code            | Size               | Qty |
|-----------------|--------------------|-----|
| PVCEJF10X100X25 | 10mm x 100mm x 25m | 1   |
| PVCEJF10X150X25 | 10mm x 150mm x 25m | 1   |



### Y POST / REBAR CAPS



ProSolve® Y Post / rebar caps provide a snug fit to most fence posts with no need to tie down due to the unique fins that hold the cap in place. Available in a bright yellow finish for visibility and safety.

| Code   | Qty         |
|--------|-------------|
| YPCAPY | Bags of 100 |



### REBAR IDENTIFICATION CAPS

| Code   | Size      | Qty         |
|--------|-----------|-------------|
| RC0618 | 6 - 18mm  | Bags of 100 |
| RC1634 | 16 - 32mm | Bags of 100 |

**TO ORDER**  
**CALL 09 218 5566 (Auckland) /**  
**03 925 8217 (Christchurch)**

## ASPHALT / BOXING PINS / BITUMEN SEALER



### COLD PATCH ASPHALT

This 20kg bag of asphalt is ideal for the smaller asphalt repairs that need to be carried out. Made from special polymers, it is easy to use and provides strong, flexible repairs. Suitable for roads, driveways, and paths. For best results, use in conjunction with our ProSolve® bitumen sealer aerosol to provide longer-lasting repairs.

| Code        | Size     | Qty |
|-------------|----------|-----|
| PVASPHALT20 | 20kg Bag | 1   |



Pins

Pin c/w Predrilled Holes

### ROAD / BOXING PINS

ProSolve® road / boxing pins are durable round steel pins with a point at one end to allow easy penetration of tough ground conditions. These pins have been specifically designed for use with (fixed and rigid) road forms. Road pins are designed to hold the road form in perfect position while concrete is drying. Available in singles.

| Code    | Diameter | Length | Multiples Of |
|---------|----------|--------|--------------|
| RP11000 | 16mm     | 1000mm | 10           |
| RP11200 | 16mm     | 1200mm | 10           |
| RP21000 | 20mm     | 1000mm | 10           |
| RP21200 | 20mm     | 1200mm | 10           |

#### Road Pins c/w Predrilled Holes

|         |      |       |    |
|---------|------|-------|----|
| RP1450H | 17mm | 450mm | 10 |
| RP1600H | 17mm | 600mm | 10 |
| RP1900H | 17mm | 900mm | 10 |



## BITUMEN COLD JOINT SEALER AEROSOL

An applied cold joint sealer for easy sealing around vertical joints. Vital to the performance of your work, edge sealing is a mandatory requirement for the Reinstatement of the Opening of Highways. Ideal for use when carrying out road pothole repair as it creates a solid adhesive bond between the concrete and asphalt surfaces.

| Code  | Size  | Carton Qty |
|-------|-------|------------|
| BITS7 | 750ml | 12         |

## ELECTRICAL, BARRIER, FLAGGING, PETRO, GAFFA & PVC DUCT TAPES



### ELECTRICAL TAPE

ProSolve® electrical PVC insulation tape is a professional grade tape which meets BS EN standards and is available in a wide variety of colours and are also sold individually.

| Code       | Colour | Size W x L | Qty       |
|------------|--------|------------|-----------|
| ELECTBLA33 | Black  | 19mm x 33m | 10/sleeve |
| ELECTB33   | Blue   | 19mm x 33m | 10/sleeve |
| ELECTG33   | Green  | 19mm x 33m | 10/sleeve |
| ELECTR33   | Red    | 19mm x 33m | 10/sleeve |
| ELECTW33   | White  | 19mm x 33m | 10/sleeve |
| ELECTY33   | Yellow | 19mm x 33m | 10/sleeve |



### GAFFA CLOTH TAPE

ProSolve® gaffa tape (also known as cloth tape) is a high quality polyethylene coated waterproof cloth tape with a pressure sensitive adhesive which can be used for binding, sealing, masking and protecting a multitude of products.

| Code      | Colour | Size       | Qty |
|-----------|--------|------------|-----|
| GAFTBLA50 | Black  | 50mm x 50m | 1   |
| GAFTS50   | Silver | 50mm x 50m | 1   |



### POLY JOINING TAPE / PVC DUCT TAPE

ProSolve® poly joining tape / PVC duct tape provides great adhesion to a variety of surfaces (including polythene, UPVC, glass, metal, wood etc.).

| Code       | Colour | Size W x L | Qty |
|------------|--------|------------|-----|
| PVPVCLBK48 | Black  | 48mm x 30m | 1   |



### FLAGGING TAPES

EXTRA LONG  
100M ROLLS

Made using high quality economically priced PVC material, this flagging tape is available in a variety of bold colours. UV stabilised to provide long-lasting colour retention. Ideal for surveying, mapping, tagging and roping off any area or any other marking application.

| Code  | Colour | Size (W x L) | Qty |
|-------|--------|--------------|-----|
| FTO   | Orange | 25mm x 100m  | 1   |
| FTPIN | Pink   | 25mm x 100m  | 1   |
| FTY   | Yellow | 25mm x 100m  | 1   |
| FTB   | Blue   | 25mm x 100m  | 1   |
| FTG   | Green  | 25mm x 100m  | 1   |
| FTR   | Red    | 25mm x 100m  | 1   |
| FTW   | White  | 25mm x 100m  | 1   |



### ANTI-SLIP SELF ADHESIVE SAFETY GRIP TAPE

ProSolve® anti-slip self adhesive safety grip tape can be applied to most surfaces and will instantly provide high quality, anti-slip protection that meets safety requirements. Ideal for stair treads, walkways, ladders and many other applications.

| Code      | Colour       | Size W x L  | Qty |
|-----------|--------------|-------------|-----|
| AST100B/Y | Black/Yellow | 100mm x 20m | 1   |
| AST50B/Y  | Black/Yellow | 50mm x 20m  | 1   |
| AST100BLA | Black        | 100mm x 20m | 1   |
| AST50BLA  | Black        | 50mm x 20m  | 1   |
| AST100Y   | Yellow       | 100mm x 20m | 1   |
| AST50Y    | Yellow       | 50mm x 20m  | 1   |
| AST100W   | White        | 100mm x 20m | 1   |
| AST50W    | White        | 50mm x 20m  | 1   |



### BARRIER TAPE

ProSolve® barrier tape is a non-adhesive economy tape designed for marking out-of-bound and hazardous areas.

| Code  | Colour    | Size W x L  | Qty |
|-------|-----------|-------------|-----|
| BTR/W | Red/White | 70mm x 500m | 1   |



### PETRO TAPE

ProSolve® petro tape is an anti-corrosion tape. It is used to protect pipes, valves and cables from weathering and can be used both above and below ground.

| Code  | Colour | Size W x L | Qty |
|-------|--------|------------|-----|
| PET50 | Brown  | 50mm x 10m | 1   |

## SITE SAFETY ACCESSORIES



## SUPER-GRIP ANTI-SLIP NITRILE GLOVES

For general use - agriculture, surveying, household, DIY etc. Easy to write whilst wearing. Nitrile coated palm and 13 gauge seamless nylon body. Stretchy material so fits most hands.

| Code       | Size        | Qty           |
|------------|-------------|---------------|
| PVGLOVES   | Large       | 12 pairs/pack |
| PVGLOVESXL | Extra Large | 12 pairs/pack |



SITE SAFETY ACCESSORIES



**MULTI SURFACE CLEANER 750ml**

A powerful cleaning formula that is effective at cleaning dirt, grime and grease from hard surfaces, leaving surfaces clean and fresh.

| Code      | Description           | Carton Qty |
|-----------|-----------------------|------------|
| PVMSC750T | Multi Surface Cleaner | 12         |



**SAFETY GLASSES**



| Code     | Description | Qty        |
|----------|-------------|------------|
| PVGLASSC | Clear       | 12 prs/box |
| PVGLASSD | Dark        | 12 prs/box |



**10 PERSON FIRST AID KIT**

Suitable for up to 10 persons. Size 21 x 28 x 10cm. This first aid kit is fully compliant and up to date with all the HSE regulations and supplied in a lightweight, easily accessible green box with locking clips.

| Code    | Qty |
|---------|-----|
| PVFKI0P | 1   |



**TO ORDER**  
**CALL 09 218 5566 (Auckland) / 03 925 8217 (Christchurch)**  
**E sales.nz@prosolveproducts.com**



**NO MINIMUM ORDER QUANTITY**



**NO-QUIBBLE GUARANTEE**



**CORDED EAR PLUGS**



- Bell shape delivers maximum comfort and easy insertion into ear
- Disposable
- Individually wrapped

| Code       | Description | Qty        |
|------------|-------------|------------|
| PVEARPLUGC | Corded      | 1 (100prs) |





## BOLLARDS & STOP / GO SIGNS



**NZTA Approved**

### T-TOP BOLLARD

Designed for maximum visibility, quick setup and low maintenance, these movable bollards or delineation posts have a 'flare-bottom' design to insure positive locking of post and base. Delineation bases are made from high quality rubber. They come standard with moulded lower handhold grip which makes them easy to pick up.

| Code   | Desc          |
|--------|---------------|
| PVTTOP | T-Top Bollard |



### FLEXIPOST

- Weight: 1.2kg
- Size: 800mm (H), Base: 200mm (W), Post: 100mm (W)
- Made from PU / EVA
- High impact resistance
- Returns to vertical after impact
- 3 x Reflective bands

| Code      | Desc      |
|-----------|-----------|
| PVFLXPOST | FlexiPost |



### STOP / GO PADDLE

Stop / Go paddles are generally used where traffic control is required. Also suitable for school areas.

- 1800mm (H) pole
- NZTA compliant
- Lightweight
- Diamond grade reflective

| Code      | Qty |
|-----------|-----|
| PVSTOP/GO | 1   |

**TO ORDER CALL 09 218 5566 (Auckland) / 03 925 8217 (Christchurch)**  
**EMAIL [sales.nz@prosolveproducts.com](mailto:sales.nz@prosolveproducts.com)**

## WHEEL STOPS



### RUBBER WHEEL STOP

The 1.6m single piece wheel stops (also called car stops or parking blocks) are made from a long lasting high density virgin rubber. This means it is both hardwearing and resistant to UV light. They are covered in a textured yellow reflective that promotes visibility during the day and night.

| Code     | Qty |
|----------|-----|
| PVRWS165 | 1   |



### PINS FOR WHEEL STOPS

No matter which wheel stop or speed hump you purchase, ProSolve® offers the fittings you need to make sure that it stays where you put them.

| Code    | Qty |
|---------|-----|
| PVWSPIN | 1   |



**LINEMARKER PAINT AEROSOL**  
**SEE PAGE 12**

**APPLICATORS**  
**SEE PAGE 13**

TOOLS



**PROFESSIONAL TAPE MEASURE**

A power return tape with a push down positive lock. 25mm x 8m.

| Code      | Size      | Qty |
|-----------|-----------|-----|
| PVP8MTAPE | 25mm x 8m | 1   |



**AUTO RETRACTABLE UTILITY KNIFE**

- Blade auto retracts
- Rubber grip for comfort
- Safety knife

| Code   | Qty |
|--------|-----|
| PVARKN | 1   |



**HEAVY DUTY RETRACTABLE KNIFE**

- Heavy duty construction
- Two spare blades
- Contour grip

| Code    | Qty |
|---------|-----|
| PVHDRKN | 1   |



**END NIPPERS 200mm**

Wide end cutting nippers for wide steel mesh applications.

| Code      | Qty |
|-----------|-----|
| PVENDNIPP | 1   |



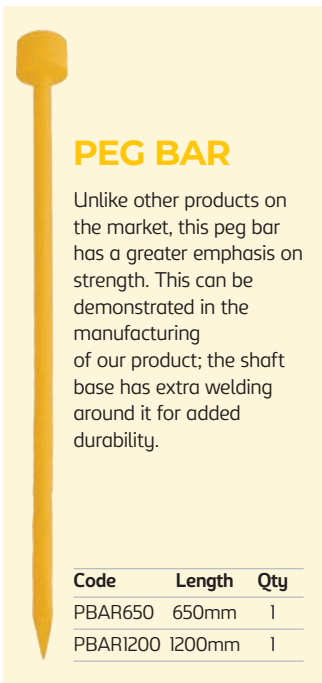
**T-ENDED MAN HOLE LIFTER**

| Code     | Qty |
|----------|-----|
| PVMHLIFT | 1   |



**FOLDING MAN HOLE LIFTER**

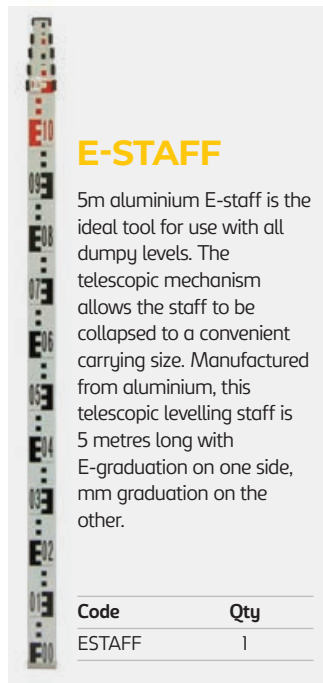
| Code      | Qty |
|-----------|-----|
| PVFMHLIFT | 1   |



**PEG BAR**

Unlike other products on the market, this peg bar has a greater emphasis on strength. This can be demonstrated in the manufacturing of our product; the shaft base has extra welding around it for added durability.

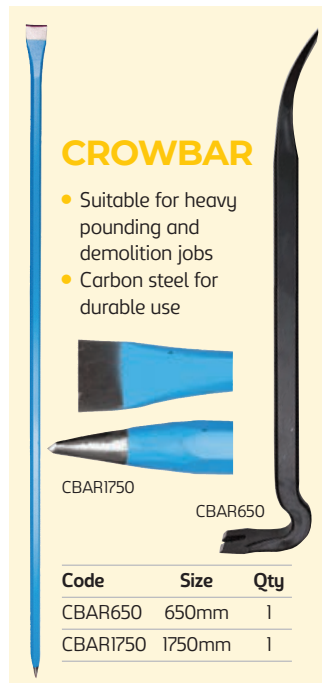
| Code     | Length | Qty |
|----------|--------|-----|
| PBAR650  | 650mm  | 1   |
| PBAR1200 | 1200mm | 1   |



**E-STAFF**

5m aluminium E-staff is the ideal tool for use with all dumpy levels. The telescopic mechanism allows the staff to be collapsed to a convenient carrying size. Manufactured from aluminium, this telescopic levelling staff is 5 metres long with E-graduation on one side, mm graduation on the other.

| Code   | Qty |
|--------|-----|
| ESTAFF | 1   |



**CROWBAR**

- Suitable for heavy pounding and demolition jobs
- Carbon steel for durable use

| Code     | Size   | Qty |
|----------|--------|-----|
| CBAR650  | 650mm  | 1   |
| CBAR1750 | 1750mm | 1   |



**SPIRIT LEVELS**

Specialist spirit level built on a rectangular profile with a shape that ensures an optimal strength-to-weight ratio.

| Code        | Size   | Qty |
|-------------|--------|-----|
| PVASL600HD  | 600mm  | 1   |
| PVASL1200HD | 1200mm | 1   |

TOOLS

1 **STEEL CLAW HAMMER (16oz)**

This chrome plated, strong tubular steel shaft 16oz hammer offers a soft nonslip, shock absorbing grip. The head is made from high-carbon steel (with claw) and is highly resistant to heat, oil and most solvents, making it perfectly suited for everyday use on light to medium-duty nailing applications.

| Code     | Qty |
|----------|-----|
| PVHAMMER | 1   |

2 **FIBREGLASS CLAW HAMMER (16oz)**

This is a superb textured, bimaterial softgrip fibreglass handle hammer. The fibreglass construction absorbs shock and reduces vibration. Heat-treated and rim-tempered high-carbon steelhead (with claw). Perfectly suited for everyday use on light to medium-duty nailing applications.

| Code        | Qty |
|-------------|-----|
| PVFIBHAMMER | 1   |

3 **SLEDGE HAMMER (10LB)**

- Suitable for heavy pounding and demolition jobs
- Fibreglass handle
- Carbon steel for durable use

| Code     | Qty |
|----------|-----|
| PVSHIOLB | 1   |

4 **CLUB HAMMER (4LB)**

Forged steel head with fibreglass handle.

| Code    | Qty |
|---------|-----|
| PVCH4LB | 1   |

5 **HOG RING TOOL**

Attaches hog rings quickly, safely and hassle-free.

| Code     | Qty |
|----------|-----|
| PVHRTOOL | 1   |



6 **SLASHERS**

Ideal for ground clearing before site set out. Slasher is an implement with a long sharp blade used to clear scrub. Its long handle and the open face of its blade, lends it to use for clearing thin and dense low-lying bush or scrub where an axe would be too clumsy.

| Code        | Description    |
|-------------|----------------|
| PVSLASHERB  | Straight Blade |
| PVSLASHERCB | Curved Blade   |

7 **PLUMBERS SHOVEL**

190mm x 285mm mouth plumbers shovel with a 1320mm length long wood handle.

| Code       | Qty |
|------------|-----|
| PVPLUMBERS | 1   |

8 **SQUARE MOUTH SHOVEL**

270mm x 320mm square mouth shovel with a 1320mm length long wood handle.

| Code      | Qty |
|-----------|-----|
| PVSQMOUTH | 1   |

9 **BROOM**

28mm x 1350mm handle is extra strong and the broom's longer length prevents stooping. Built tough with the best quality materials, a unique bracket design secures the handle deep inside the block locking it in place. Features a 355mm head width with extra stiff bristles for pushing the heaviest of loads.

| Code    | Qty |
|---------|-----|
| PVBROOM | 1   |

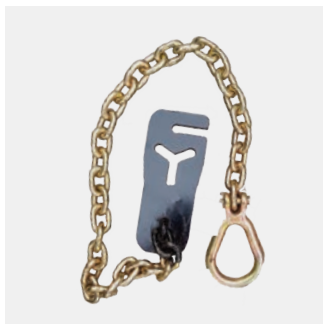


10 **RAKE**

410mm x 75mm 16 tooth general purpose contractors rake with a 1370mm wooden handle.

| Code   | Qty |
|--------|-----|
| PVRAKE | 1   |

TOOLS



**POST PULLER CHAIN**

- Remove steel posts and timber posts with ease
- Attaches to digger buckets for easy post removal
- Heavy duty

| Code     | Qty |
|----------|-----|
| PVPOSTCH | 1   |



**POST & STAKE RAMMER**

A top quality post & stake rammer, manufactured from galvanised steel and used widely for driving Steel Y Posts / Waratahs and wooden stakes into the ground.

| Code  | Qty |
|-------|-----|
| YPRAM | 1   |

**RTOSURE MEASURING WHEEL & BAG**

A top quality measuring wheel, allowing greater accuracy using a tight tolerance and one meter circumference wheel. This measuring wheel comes with a support stand, collapsible handle, reset button on the handle for ease of use and the highest specification measuring wheel in the budget market. Available in deluxe or economy options.

| Code    | Description          | Qty |
|---------|----------------------|-----|
| RSMWCP  | Classic Professional | 1   |
| RSMWE   | Economy              | 1   |
| RSMWBAG | Rotosure Bag         | 1   |



**Y POST LIFTER / REMOVER**

An easy, hassle-free way of extracting Y Posts on site.

| Code      | Qty |
|-----------|-----|
| PVYLIFTER | 1   |

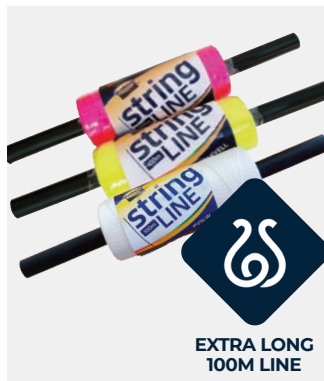


**PEG BAG**

Strong and sturdy peg bag with shoulder strap for carrying pegs and other field equipment with ease. 300mm diameter x 800mm tall.



| Code     | Qty |
|----------|-----|
| PVPEGBAG | 1   |



**STRING LINES**

Braided nylon for strength. Fluorescent pink or yellow for easy visibility.

| Code      | Colour             | Qty |
|-----------|--------------------|-----|
| PVSLFPIN  | Fluorescent Pink   | 1   |
| PVSLFYELL | Fluorescent Yellow | 1   |
| PVSLW     | White              | 1   |



**ALLOY CHALK LINE (30m) & CHALK**

30m string, high impact alloy case for extra durability. Stainless steel hook avoids rust. Comes complete with 4oz of blue chalk.

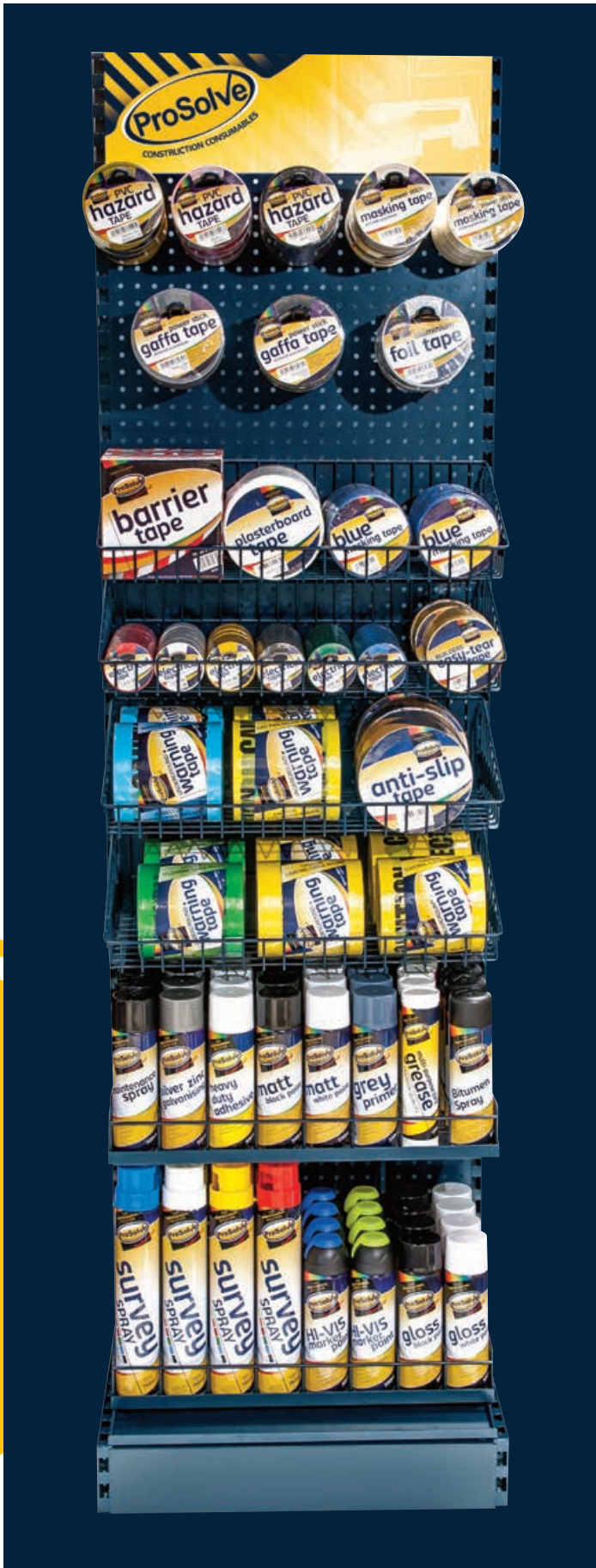
|              |
|--------------|
| Code PVACLWC |
|--------------|



**GREASE GUN**

A side lever heavy-duty grease gun, suitable for use with 14oz (400cc) grease cartridges or 500g bulk fill. Comes complete with a 6" rigid extension.

| Code    | Qty |
|---------|-----|
| BDY1896 | 1   |



## MIXED STAND

A mix of our most popular ProSolve® products on one stand. We provide the display stand FOC, you simply buy the stock and start selling.



# Your go-to supplier for survey, industrial and construction consumables



Survey Consumables



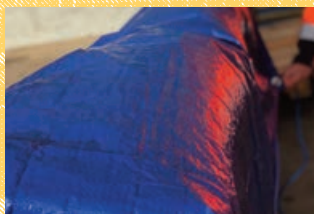
Aerosols



Site Set Up



Pens, Pads, Crayons



Construction Essentials



Concrete / Asphalt



Erosion Control



Tapes



Pro+Tect Range



Traffic Management



Tools



Merchandisers

CALL 09 218 5566 (Auckland) / 03 925 8217 (Christchurch)  
EMAIL [sales.nz@prosolveproducts.com](mailto:sales.nz@prosolveproducts.com)  
WEB [www.prosolveproducts.co.nz](http://www.prosolveproducts.co.nz)





**GOODS DESPATCHED  
ON SAME DAY / NEXT DAY  
DELIVERY SERVICE**



**FREE  
TECHNICAL SUPPORT  
HELPLINE**



**BRANCHES ON  
NORTH & SOUTH  
ISLAND**

**PLUS FAST DELIVERY TO ANYWHERE!**

**Need to order or can't find the product you need,  
call our friendly team now...**

**CALL 09 218 5566 (Auckland) / 03 925 8217 (Christchurch)**

**EMAIL [sales.nz@prosolveproducts.com](mailto:sales.nz@prosolveproducts.com)**

**Branches in AUCKLAND & CHRISTCHURCH**

#### TERMS & CONDITIONS AND RETURNS PROCEDURES

- A transaction carried out in accordance with the ProSolve® standard terms & conditions.
- All costings subject to GST at the current prevailing rate.
- Goods which are unsuitable may be returned for credit, or exchange, providing they are returned within 14 days of receipt of goods, these conditions are subject to the following:
  1. Goods are returned at the cost of the customer
  2. Goods and the packaging is returned undamaged
  3. Returned goods are returned with full returns advice note stating invoice number, customer name, delivery address and order number/reference
  4. Goods which have been specially ordered cannot be accepted for return
  5. Goods returned after 14 days may be subject to a 20% restocking charge
  6. ProSolve® does not bear the responsibility for expenses incurred for the fitment/removal of incorrectly supplied parts
  7. Customer claims for replacement or credit for shortages or damages can only be accepted within 72 hours after receipt of goods.

E & OE

\* All courier delivery services are subject to stock, courier area, availability and demand.

Visit the website to see our full range. With all products in-house, you can rest assured that we can deliver on time, every time.

**[www.prosolveproducts.co.nz](http://www.prosolveproducts.co.nz)**

Issue: 0124NZ